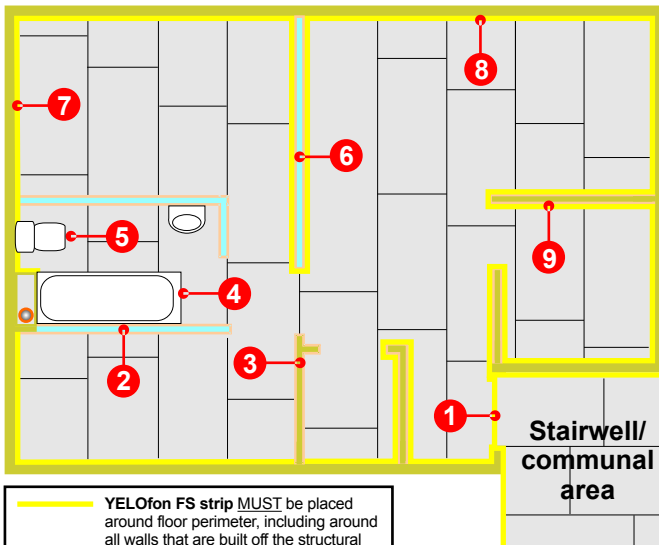
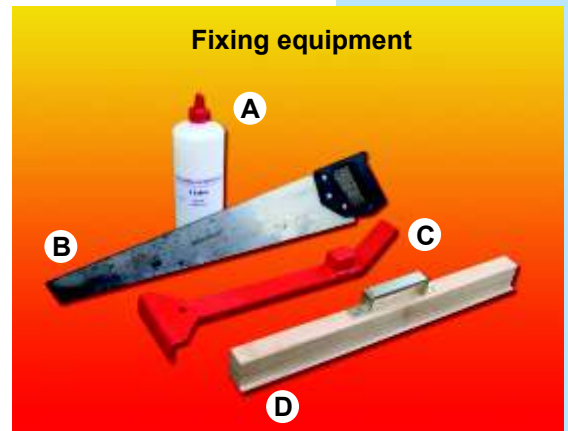


The acoustic performance of the floor structure will be compromised if the ScreedBoard 28 is not completely isolated from the timber sub-floor, soil pipes, door frames, the surrounding walls and their treatments. To address this risk, each potential problem area needs to be detailed accordingly.

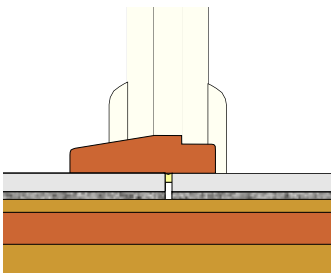


**YELOfon FS strip MUST be placed around floor perimeter, including around all walls that are built off the structural**



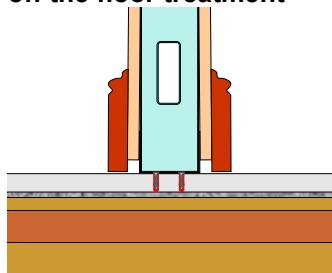
**A.** ScreedBoard adhesive: 1L bottle  
**B.** Hand or skill saw  
**C.** ScreedBoard "Pull bar"  
**D.** ScreedBoard "Fixing batten"  
Packing shims (not shown)

### 1 Door threshold



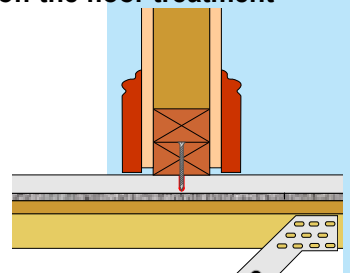
Leave a 5-10mm expansion gap between the habitable area and the communal area ScreedBoards.

### 2 Metal frame partition built off the floor treatment

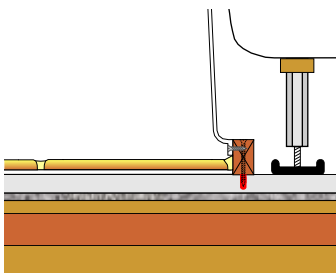


Non-load bearing metal frame or timber stud walls can be built directly off the ScreedBoard 28. Care should be taken to ensure screws DO NOT penetrate the resilient layer.

### 3 Timber stud partition built off the floor treatment

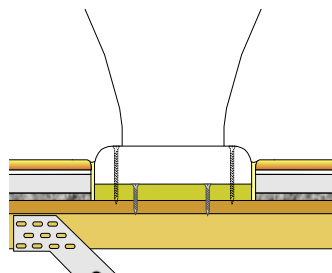


### 4 Baths, shower trays and sanitary ware built off floor treatment.



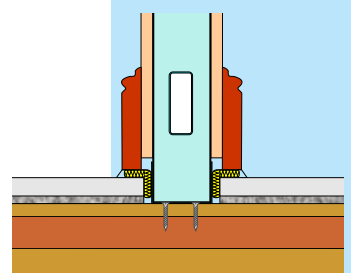
Baths, shower trays and sanitary ware can be built directly off the ScreedBoard 28. Under no circumstance should screws penetrate the resilient layer.

### 5 Baths, shower trays and sanitary ware built off the structural floor



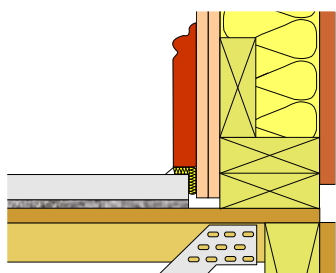
Baths, shower trays and sanitary ware built off the structural floor should be isolated from the ScreedBoard 28 and any floor finished.

### 6 Metal frame partition built off the structural floor



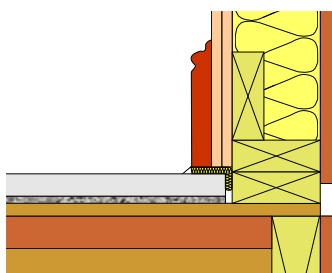
Lightweight partition walls built off the structural floor MUST be isolated from the ScreedBoard with YELOfon FS50 strip.

### 7 Wall treatment installed before the ScreedBoard 28



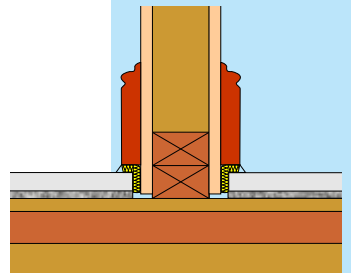
Wall treatments MUST be isolated from the ScreedBoard 28 with YELOfon FS50 strip.

### 8 Wall treatment installed after the ScreedBoard 28



Wall treatments MUST be isolated from the ScreedBoard 28 with YELOfon FS50 strip.

### 9 Timber stud partition built off the structural floor



Lightweight internal walls built off the structural floor MUST be isolated from the ScreedBoard with YELOfon FS strip.