

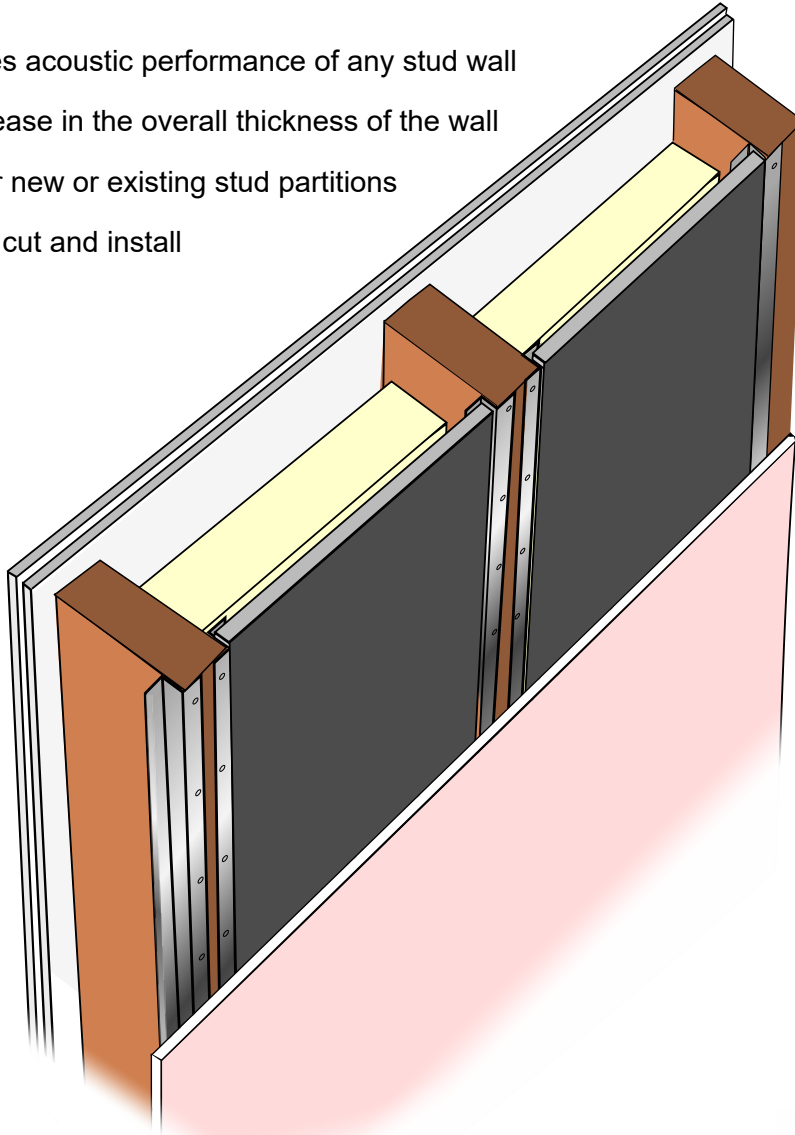
## Trim 'Exclusive'

# Concealed Acoustic System

## Trim Space Saver Wall System

**Between studs acoustic system, installed system is fitted level with the wall studs and minimises wall thickness.**

- Improves acoustic performance of any stud wall
- No increase in the overall thickness of the wall
- Ideal for new or existing stud partitions
- Easy to cut and install



Trim Space Saver Wall System has been designed to improve acoustic performance of new or existing stud partitions without adding to the overall thickness of the wall.

By installing our high performance Trim Space Saver board between the studs on specially designed rails it is possible to increase the acoustic performance of the wall while keeping all the components within the structure of the the wall.

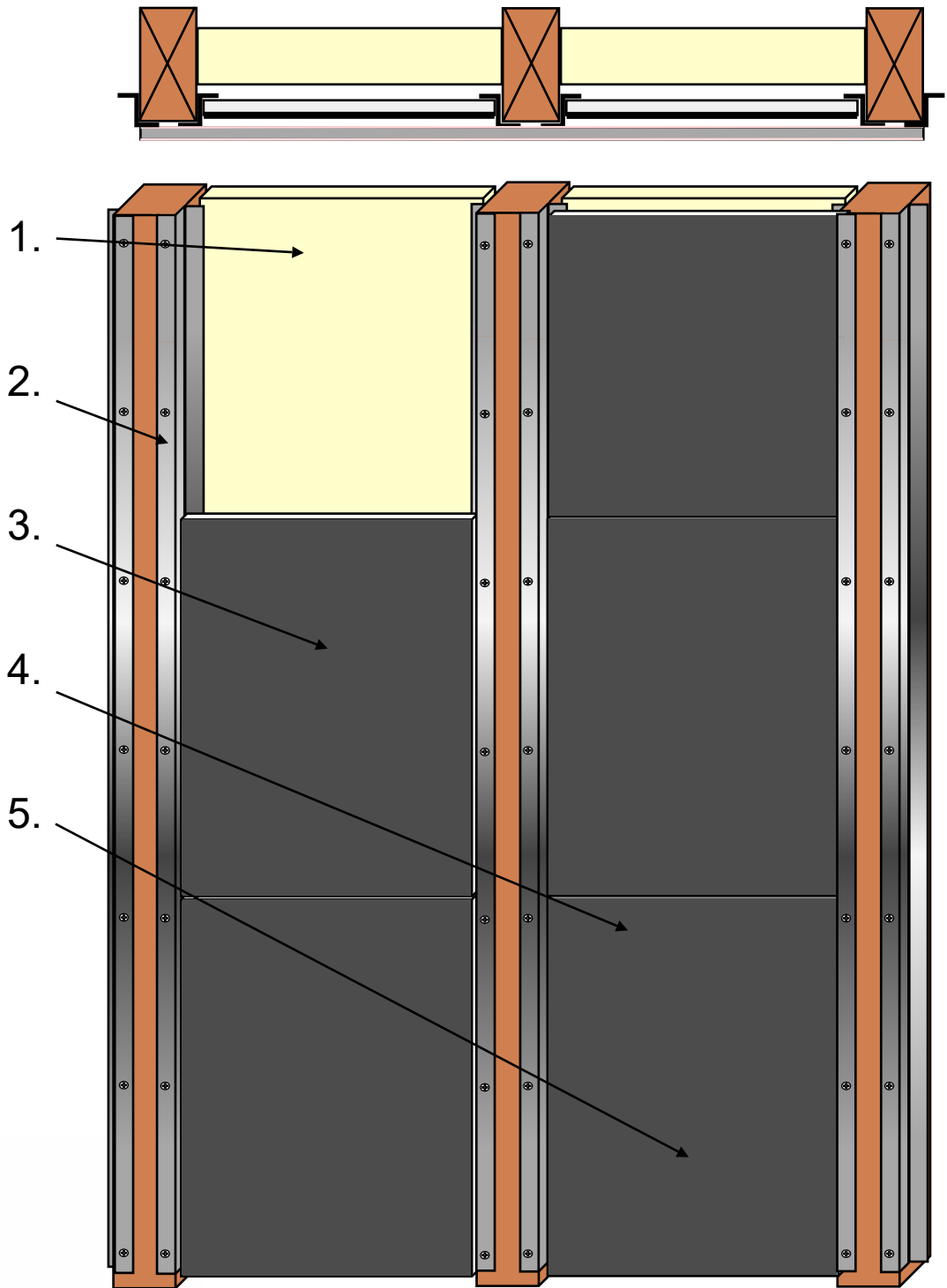
The standard installation of Trim Space Saver Wall System will only require it to be fitted on one side of the partition with two layers of plasterboard on the other side, however for additional performance Trim Space Saver Wall System can be installed on both sides of the stud partition.

Once Trim Space Saver Wall System is installed it is finish with a 12.5mm fire rated plasterboard and plaster skimmed.



## Trim 'Exclusive'

### Trim Space Saver Wall System - Fitting Guide



#### ***Five easy steps to install Trim Space Saver Wall System***

1. Friction fit 50mm mineral fibre between studs.
2. Cut to size and screw fix or nail space saver rails to studs.
3. Cut to size Trims space saver board, bond space saver board to rails using a bead of Duoseal Mastic.
4. Overboard with 12.5mm fire rated plasterboard fixed to studs
5. Plaster skim finish