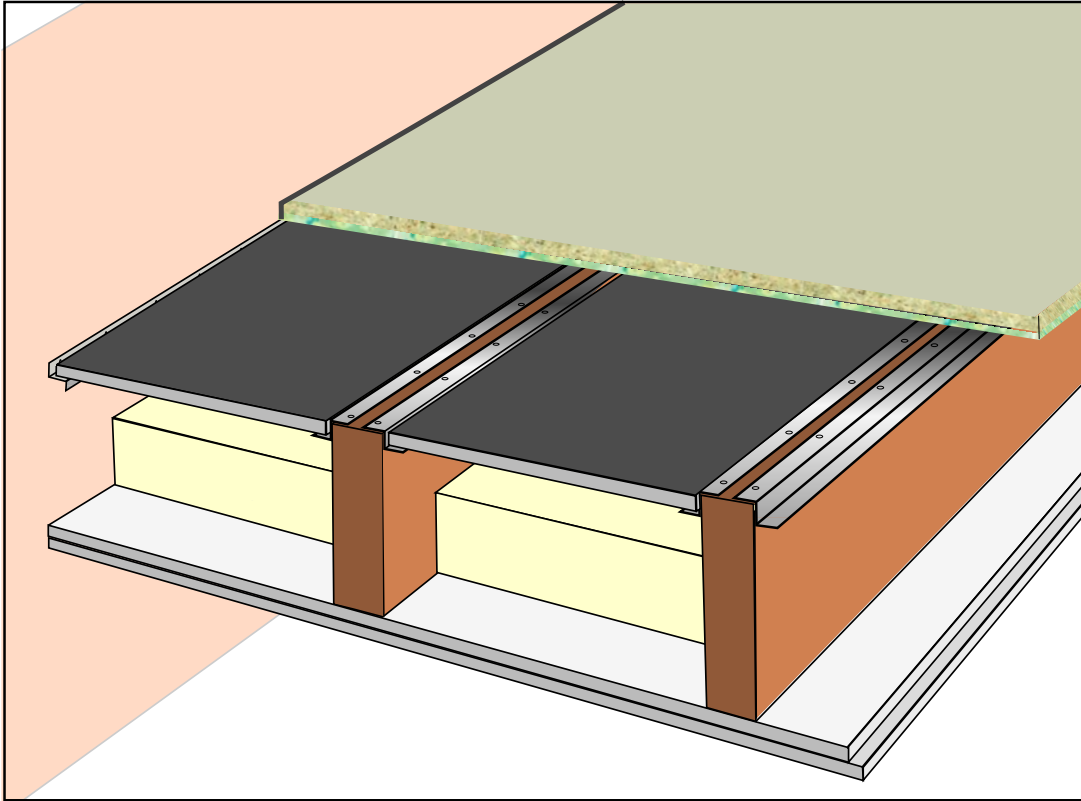


Trim 'Exclusive'

Concealed Acoustic System

Trim Space Saver Floor System

Between joists acoustic system, installed system is fitted level with top of joists and has no effect on existing floor levels.



Trim Space Saver Floor System is the ideal solution for upgrading timber floor constructions without effecting the floor level.

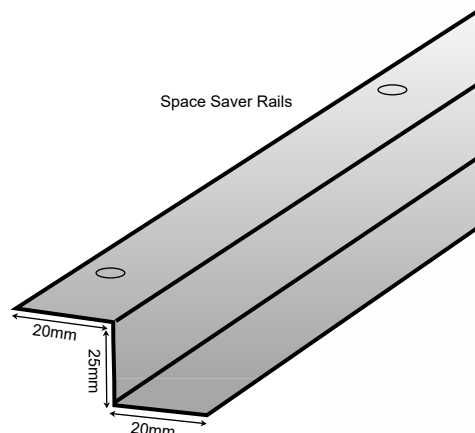
The innovative design is easy to fit and all components are installed within the floor cavity and finish level to the top of the joists.

This system enables acoustic performance with a standard floor which means no problems with skirting's or cutting doors.

Where building regulation standards are required the addition of a Trim Defender floor system will ensure the floor construction will exceeds current standards with no additional acoustic ceiling required.

System Components

- 100mm Acoustic Insulation
- Trim Space Saver Rails
- Trim Space Saver Board
- DuoSeal acoustic mastic
- Defender perimeter Isolation tape
- Defender 28, 32 or 35 Flooring
- Defender joint Adhesive
- 25mm Screws or nails



Trim Space Saver - Floor



Trim 'Exclusive'

Trim Space Saver Flooring System - Fitting Guide

Install 100mm mineral wool acoustic insulation between floor joists ensuring the entire floor void is covered.

Fitting Space Saver Rails to wall (Fig.1)

Mark the top of the joist level on the wall. then mark another line 5mm below joist level line and fix rail level with the bottom line.

Fix rail to the wall using traditional anchors ensuring horizontal plain of the rail is level with the horizontal plain on the adjacent rail wing on adjacent joist.

Fitting Space Saver Rails to joists

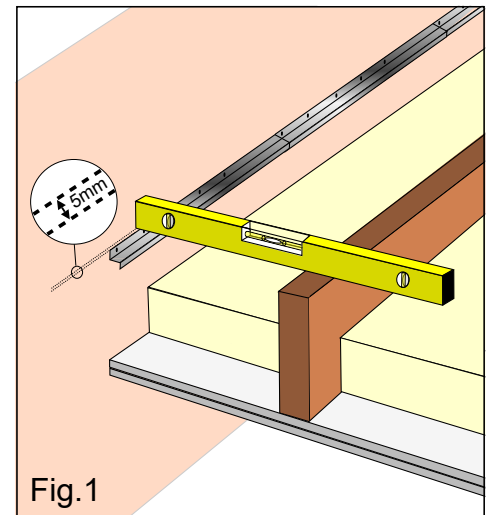
Cut joist rail to the required length and screw or nail to both sides of all joists, where joist rails meet, ensure that the ends of the rail are flush and level.

It is essential that the floor is as airtight as possible so seal all holes and gaps with DuoSeal acoustic mastic

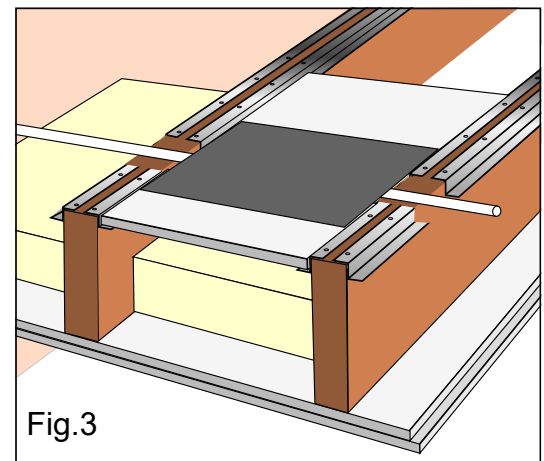
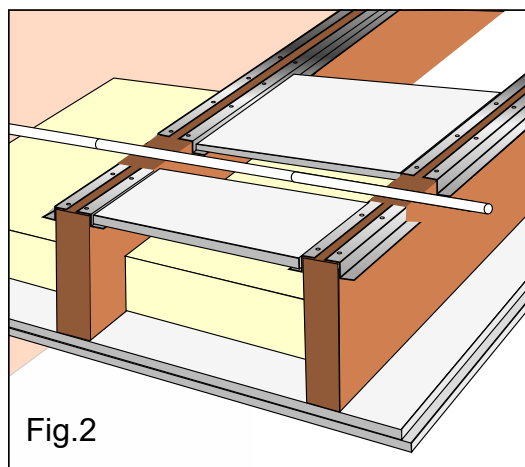
Fitting the Trim space saver board

Cut Trim space saver board to slot snugly onto the wings of rails.

Seal all perimeters with DuoSeal acoustic mastic, Where space saver boards butt together seal joints with DuoSeal acoustic mastic or bond a layer of Trim 7Kg barrier mat over the joint.



Where noggins or pipes etc, obstruct the space saver board and rails, fit rails and board up to the obstruction as below, then bond a layer of Trim 7Kg barrier mat to the top of the board on either side to bridge the obstruction then seal edges where barrier mat meets the joists. (Fig.2 & Fig.3)



Where there is not enough room to install a rail at wall junction.

Gently rest the space saver board onto the acoustic insulation then seal carefully with DuoSeal acoustic mastic taking care not to put undue pressure on to the ceiling below.

N.B. It is not recommended to rest the Trim space saver board onto any other part of the insulation in the floor void as this would put unnecessary stress on the ceiling below.

Install the Defender acoustic floating flooring as per manufactures recommendations

Useful tips

To minimise waste cut the Trim space saver board across its length to create tiles

Always seal all holes and gaps with DuoSeal acoustic mastic

Always fit acoustic flooring to level joists.

Always wear suitable protection for the job.

Use a contact adhesive to bond the barrier mat to the space saver board

If you're not sure, contact your local Trim Acoustics technical team.