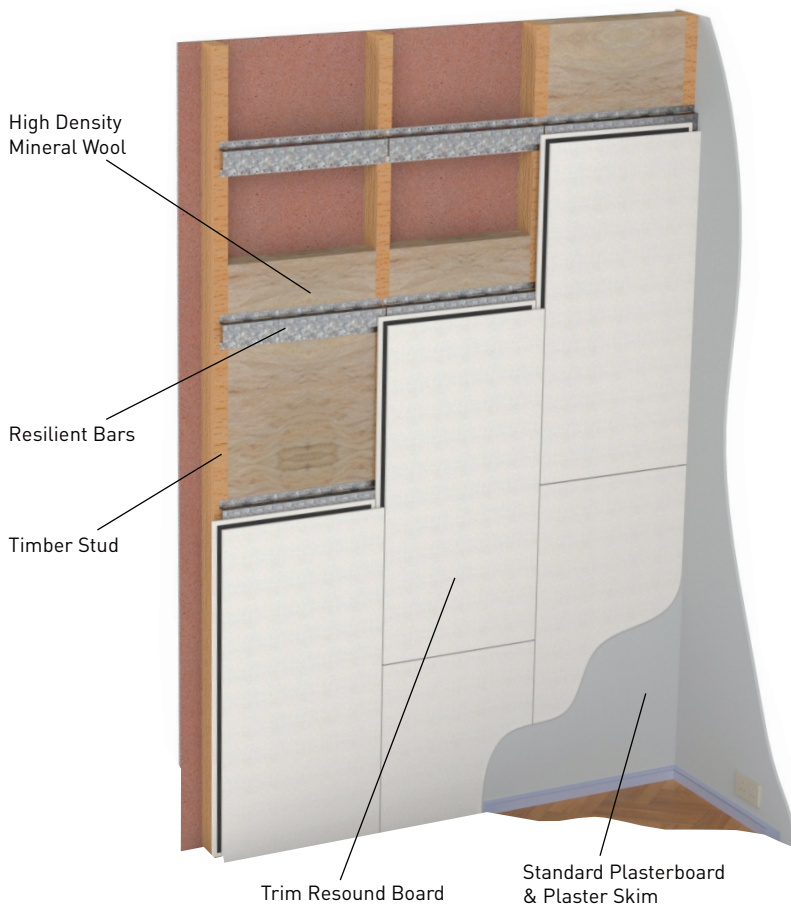


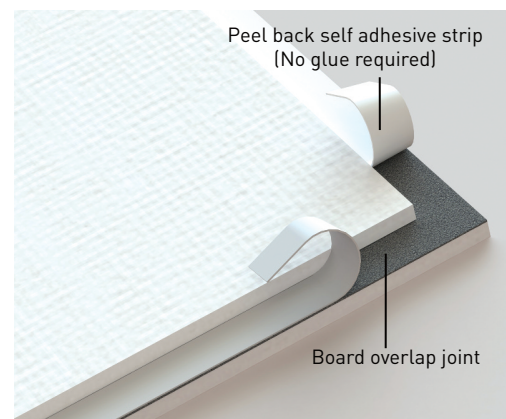
ACOUSTIC WALLS & CEILINGS

Product Description

Trim Resound Acoustic Board has been designed to provide additional performance compared to more traditional plasterboard based systems. Resound Board is constructed of high density gypsum fibre board with a mass loaded vinyl central core, the composite design reduces sound resonance through wall and ceiling constructions, reducing both airborne and impact noise.



Manufactured in an easy to handle size panel (1200mm x 600mm) and with an innovative self-adhesive jointing system new Trim Resound Board can be easily installed with no need for adhesive.



Facts & Figures

- Can be used to meet Building Regulations Document E
- Only 22mm thick
- Can be used for walls and ceiling
- Self-adhesive jointing system
- Ideal for conversion and new build
- Reduces airborne and impact noise
- Board size: 1200mm x 600mm 22mm thick
- Weight per board 20.5kg [28.45kg m²]
- Board designed with interlocking overlap and self-adhesive jointing system

Performance

Ceiling (Typical timber joist ceiling construction)

| Airborne DnT,w (dB) | DnT,w + Ctr (dB) | Impact LnT,w (dB) |
|---------------------|------------------|-------------------|
| 50 | 43 | 61 |

Wall (Typical timber stud partition wall with Resound System on one side and 2 x plasterboard on the other)

| Airborne DnT,w (dB) | DnT,w + Ctr (dB) |
|---------------------|------------------|
| 54 | 45 |



Trim Acoustics
 Cardinal West, Cardinal Way,
 Godmanchester, Huntingdon,
 Cambridgeshire PE29 2XN
 T: 020 8443 0099
 E: sales@trimacoustics.co.uk
 W: www.trimacoustics.co.uk