

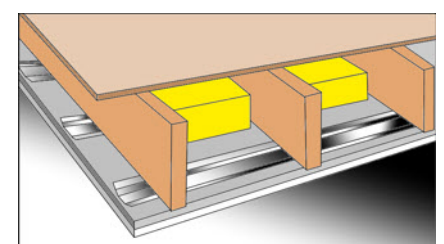
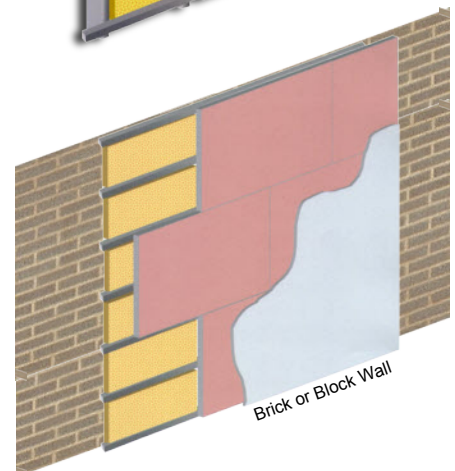
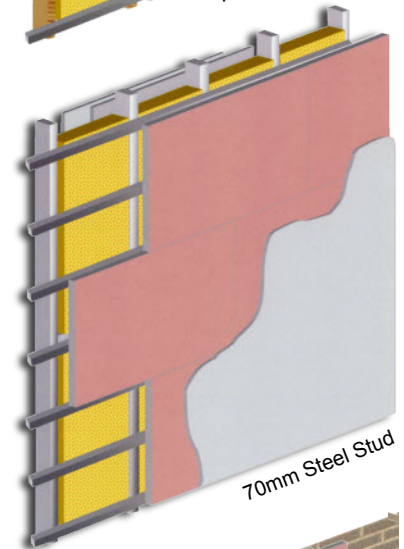
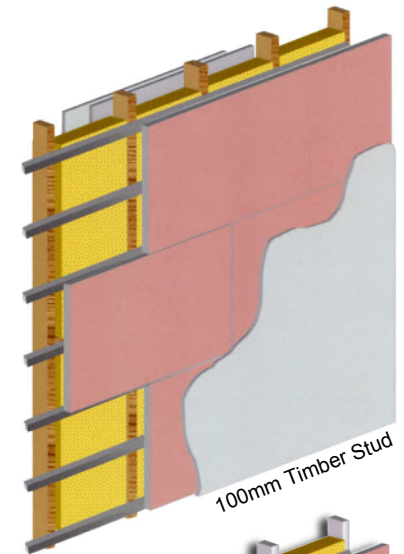
# Trim Acoustics

## Acoustic Walls & Ceilings

### Defender Wall - Fitting

#### Recommended installation to metal and wooden stud walls

- Fix Trim Isolation Bars to stud, horizontal at 450mm centres
- Install required thickness of Soundslab Insulation to cavity between studs
- Fit 45mm Isolation Tape to perimeter where defender boards will come into contact with floor, walls & ceiling.
- Starting at floor level and finishing at ceiling level.
- Cut off bottom overlap edge from Defender board & overlap on end that will be adjacent to side wall.
- Fit Defender board at floor level to Isolation Bars, fixing only into the Isolation bars with 32mm dry wall screws.
- Work across the wall in horizontal direction.
- Continue with additional rows to complete the wall
- Ensure any gaps are filled with Acoustic Mastic
- Finish with scrim joints and plaster skim
- \* The remaining side of the partition will require upgrading with a second layer of 12.5mm plasterboard, fixed directly into the studwork.



#### Recommended installation to brick & block walls

- Fix Trim Isolation Bars to wall, horizontal at 450mm centres (Drilled & Plugged)
- Install 25mm Soundslab Insulation to wall, fitting tightly between the Isolation Bars
- Fit 45mm Isolation Tape to perimeter where defender boards will come into contact with floor, walls & ceiling.
- Starting at floor level and finishing at ceiling level.
- Cut off bottom overlap edge from Defender board & overlap on end that will be adjacent to side wall.
- Fit Defender board at floor level to Isolation Bars, fixing only into the Isolation bars with 32mm dry wall screws.
- Work across the wall in horizontal direction.
- Continue with additional rows to complete the wall
- Ensure any gaps are filled with Acoustic Mastic
- Finish with scrim joints and plaster skim

Defender is also suitable for ceiling applications where additional airborne sound reduction is required. Although defender can be fixed over an existing ceiling, for increased effectiveness the existing ceiling boards should be removed and the ceiling cavity filled with 100mm Soundslab insulation. As with wall installations, Isolation bars are fixed to the joist and Defender boards are mounted on them and finish with a plaster skim.