

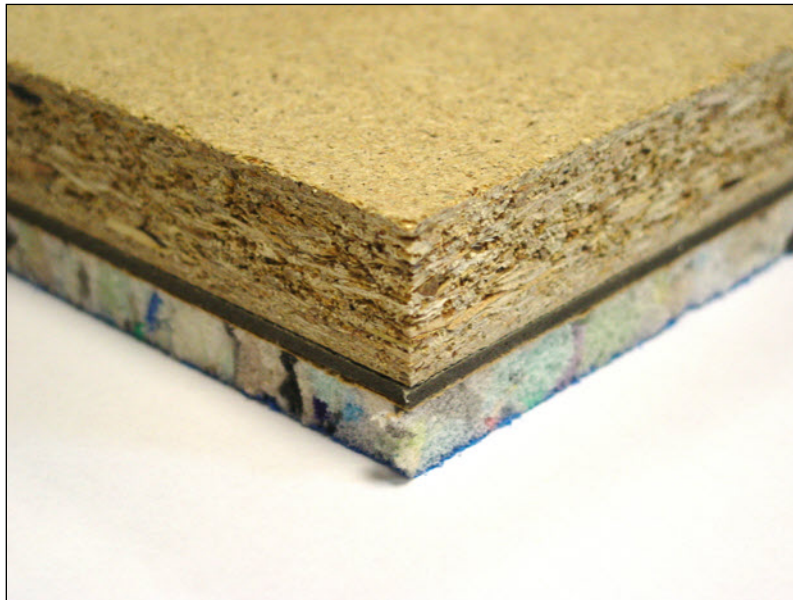
Defender 35

High Performance Acoustic Floor System

Trim Defender 35 should be laid directly onto the joists in a broken bond pattern with all joints glued and perimeters sealed using 37mm x 10mm Perimeter isolation tape.

Features & Benefits

- Supports Floor Loadings defined in BS: 6399-1: 1996
- Superior Performance - the recycled foam used has excellent impact Improvement characteristics and superior stability within a single layer.
- Foam fire tested to BS4790
- Polymeric Barrier fire tested to D_{fl-s1}
- Quality Assured - Trim Acoustics products meet all current standards.



Trim Defender 35 is designed to reduce sound transmission through new build and existing applications. Trim Defender 35 consists of 22mm P5 moisture resistant chipboard bonded to 3mm Polymeric Barrier bonded to 10mm layer of recycled foam, the base is protected by an anti crumb encapsulating layer. When installed as part of a complete sound reduction system it enables a timber floor to meet the sound transmission regulations of Part E

Performance

Treated Floor	$D_{nT,w} + C_{tr}$	$L_{nT,w}$
	46dB	56dB

Performance figures based on a ceiling construction of: 45kg/m³ insulation between joist & 30kg/m² double plasterboard.

System Components

Overall Dimensions	2400mm x 600mm x 35mm thick
22mm P5 moisture resistant chipboard	
Resilient layer composition	3mm Polymeric Barrier 10mm Recycled Acoustic Chip Foam With anti crumb encapsulating layer.

Defender 35

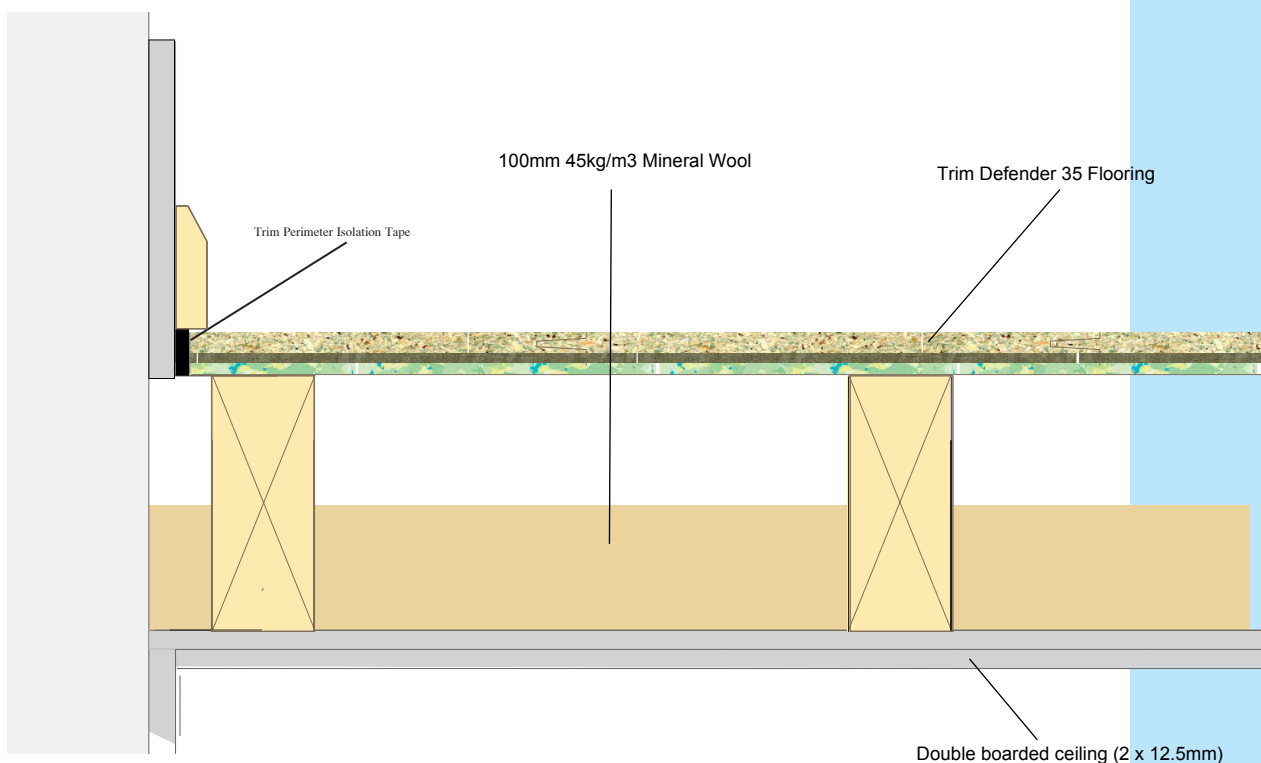
Fitting Instructions

Ceiling Treatments

- Increasing the mass and absorption of the floor by laying mineral wool between the joists .
- Form the ceiling with a minimum of two layers of plasterboard (2 x 12.5mm)
- Increased performance can be achieved by the fitting of resilient bars to the joist prior to fitting the plasterboard

Flanking Transmission

The acoustic performance of a floor can be compromised by the passage of sound through walls and ducts, which adjoin or penetrate a floor, a phenomenon known as flanking transmission. To reduce flanking transmission the acoustic flooring must be isolated from walls and other structural elements. Trim Acoustics Isolation Strip is a flexible polyethylene strip designed to form and seal between the flooring and the wall.



Trim Defender 35 over timber joists.

Installation

- Use isolation tape on all perimeter walls
- Lay Defender 35 boards over existing floor joists in a broken bond pattern, applying adhesive to all tongue and groove panel joints.